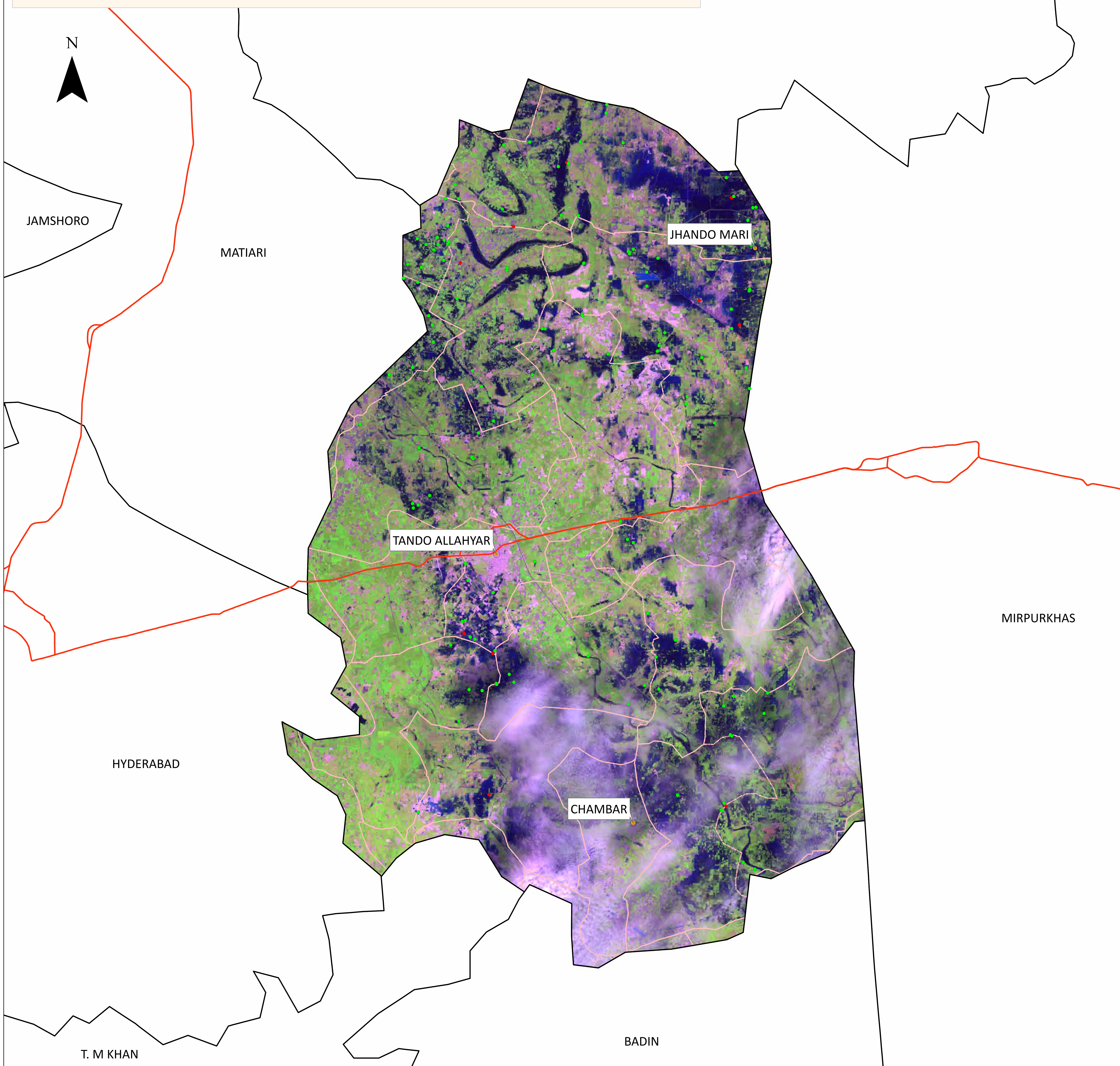


# Flood Inundation in Tando Allahyar District

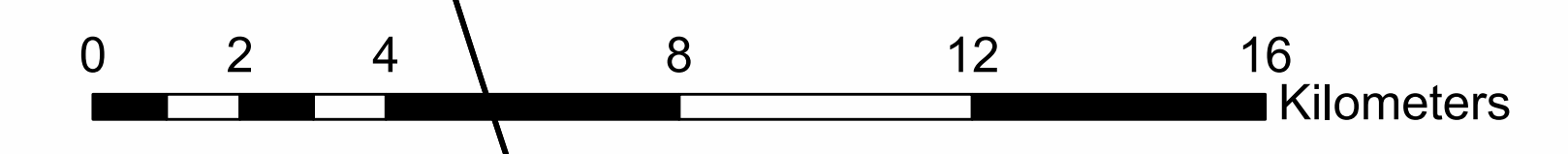


District Profile			
	21/08/2022	14/09/2022	Change
District Area	1,572.86 Sq.Km		
Area Inundated	103.54 Sq.Km	107.99 Sq.Km	+4.45
	6.58%	6.86%	
Crop Land	350,407.12 Acres		
Crop Land Inundated	23,161.19 Acres	21,355.12 Acres	-1,806.08
	6.61%	6.09%	
Rainfall (Jul-Aug)	575 mm		
Population (as per 2017 Census)	880,515		
Affected Union Councils	28 Out of 28	23 out of 28	

UC-wise Affected Villages						
Name	Submerged in Water			Surrounded by Water		
	21/08/2022	14/09/2022	Change	21/08/2022	14/09/2022	Change
BEGAN JARWAR	-	-	0	8	4	-4
BUKERANI SHARIF	-	1	+1	5	5	0
CHAMBER-1	-	-	0	11	-	-11
CHAMBER-2	1	-	-1	11	4	-7
DAD KHAN JARWAR	-	1	+1	12	1	-11
DASORI	-	1	+1	10	8	-2
DHINGANO BOZDAR	-	-	0	2	1	-1
GHULAM SHAH LAGHA	-	-	0	2	-	-2
HALE POTA	-	-	0	2	-	-2
JHANDO MARI	-	3	+3	18	21	+3
MANIK LAGHARI	-	-	0	2	-	-2
MIRABAD	1	3	+2	23	23	0
MISSAN	-	-	0	5	2	-3
MOOLAN	-	-	0	1	-	-1
ODEROLAL STATION	-	-	0	4	8	+4
ODEROLAL VILLAGE	-	-	0	9	14	+5
PAK-SANGHAR	-	-	0	16	6	-10
PIYARO LUND	-	-	0	8	6	-2
SANJAR CHANG	-	1	+1	18	8	-10
SH.BHIRKIO	-	-	0	6	-	-6
TANDO ALLAHYAR 2	1	1	0	2	8	+6
TANDO ALLAHYAR 4	1	-	-1	4	-	-4
TANDO SOOMRO	1	-	-1	10	11	+1
Total	5	11	+6	189	130	-59

**Disclaimer:** 30m resolution satellite image has been used for preliminary damage assessment and depicts status of flood inundation as of image acquisition date. The Union Council boundaries and names used in development of this product were obtained from Board of Revenue, Sindh.

**Source:** Landsat 8 Collection 2, 14 September 5: 51 GMT



- Cities/Towns
- Union Councils
- Highways
- Villages (As per 14-09-2022)
- Submerged under Water
- Surrounded by Water